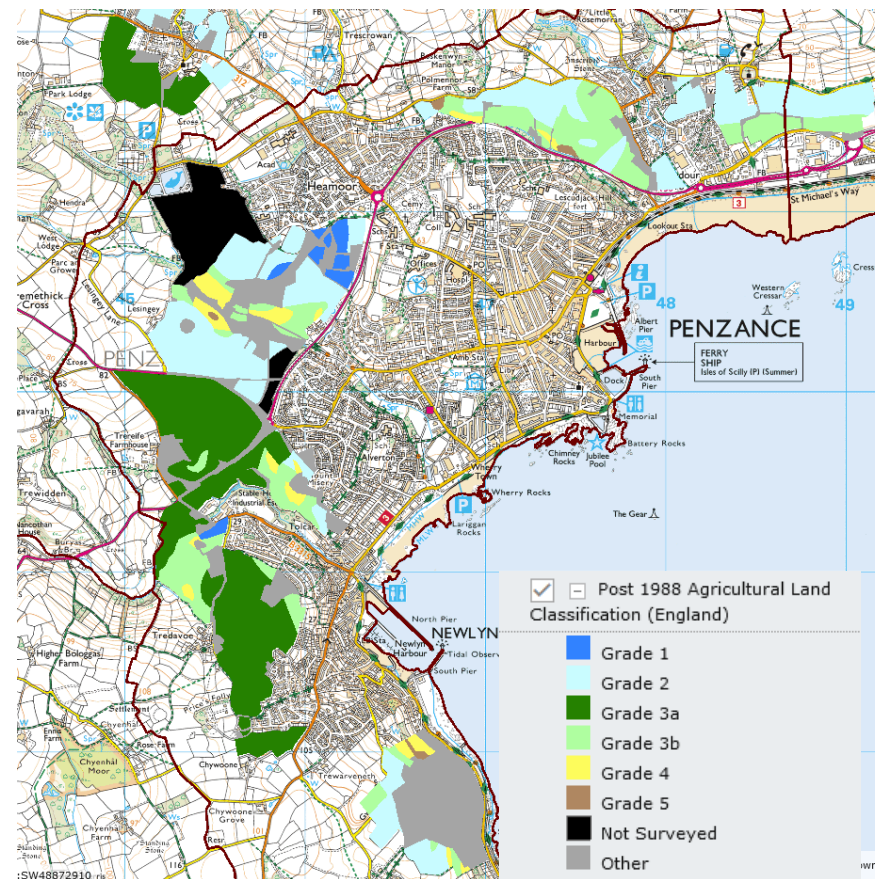
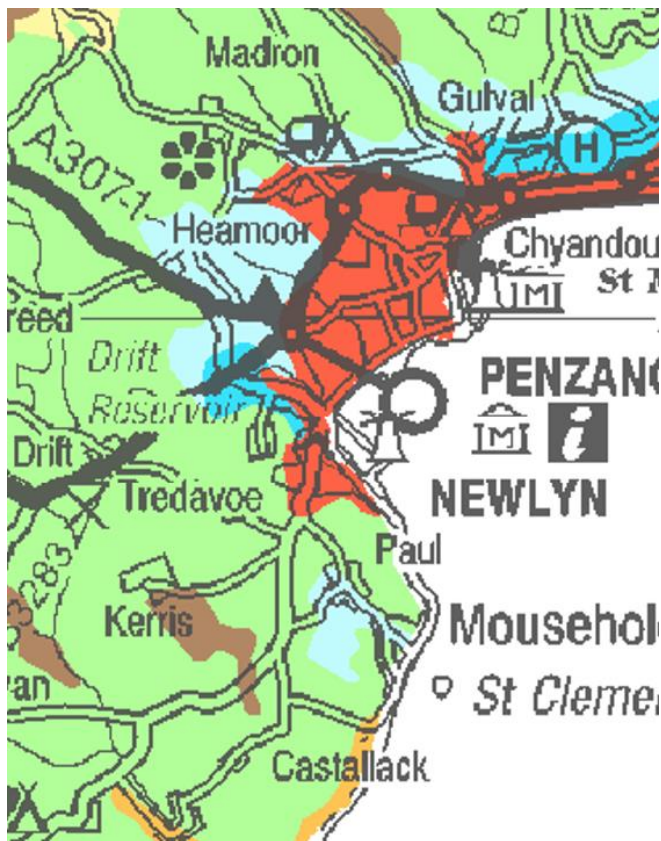


APPENDIX 7: AGRICULTURAL LAND CLASSIFICATION IN THE PENZANCE CIVIL PARISH



September 2023



No comprehensive up-to-date mapping of agricultural land classification within the Penzance civil parish was available at the time of writing, so mapping has been provided from the two available sources. The map above left (pre-1988 classification) shows the entire parish; it does not show the split between grades 3a and 3b, but does show that all agricultural land within the civil parish of Penzance is Grade 1 (dark blue), Grade 2 (light blue) or Grade 3 (green). The map above right (post-1988 classification) gives a more up-to-date and detailed vision (including the split between 3a and 3b), but because the classification data set is incomplete, some areas of land on the outer fringes of the parish are not mapped¹.

¹ Sources: SW Region 1:250,000 Series Agricultural Land Classification (pre-1988), MAGIC interactive mapping (post-1988), both from www.naturalengland.org.uk.